



£575 PCM

Vale Drive, Shirebrook, Derbyshire

Terraced House | 2 Bedrooms | 1 Bathroom

0115 697 28 29



www.normangalloway.co.uk



Step Inside

Key Features

- Newly Refurbished
- Suitable for small family
- 2 Good Bedrooms
- 2 Reception Room
- Front and Rear Gardens
- Off Road Parking

Property Description

This is a recently refurbished house in Shirebrook, with new kitchen, carpets and decoration. Very close to Sports Direct and other employers. Available now and priority to care leavers and those fleeing DV.

Main Particulars

Property description

We have pleasure in bringing this delightful 2-bedroom refurbished house to the market in Shirebrook. With good public transport, schools and employment in the area this property is suitable for a small family.

If you are a care leaver or are fleeing domestic violence then we will prioritise your application.

Front Garden

Enclosed, good sized lawn with small patio

Lounge Room

Good light and comfortable lounge area with plenty of sockets, new carpet, decoration and fire detection. With door leading to stairs and a door leading into a large 2nd reception room. With double glazed window overlooking the front garden.

Reception Room

Possibly this will be the heart of your house, a good sized room that can be used as a second lounge or dining area or family room. Newly decorated and leading to the kitchen. Double glazed window overlooking the rear yard area.

Kitchen

A high quality kitchen with gas combi boiler. Plenty of work surfaces and cupboard and storage space. Clean, crisp and light finish, with rear door leading into the rear yard.

Bedroom one

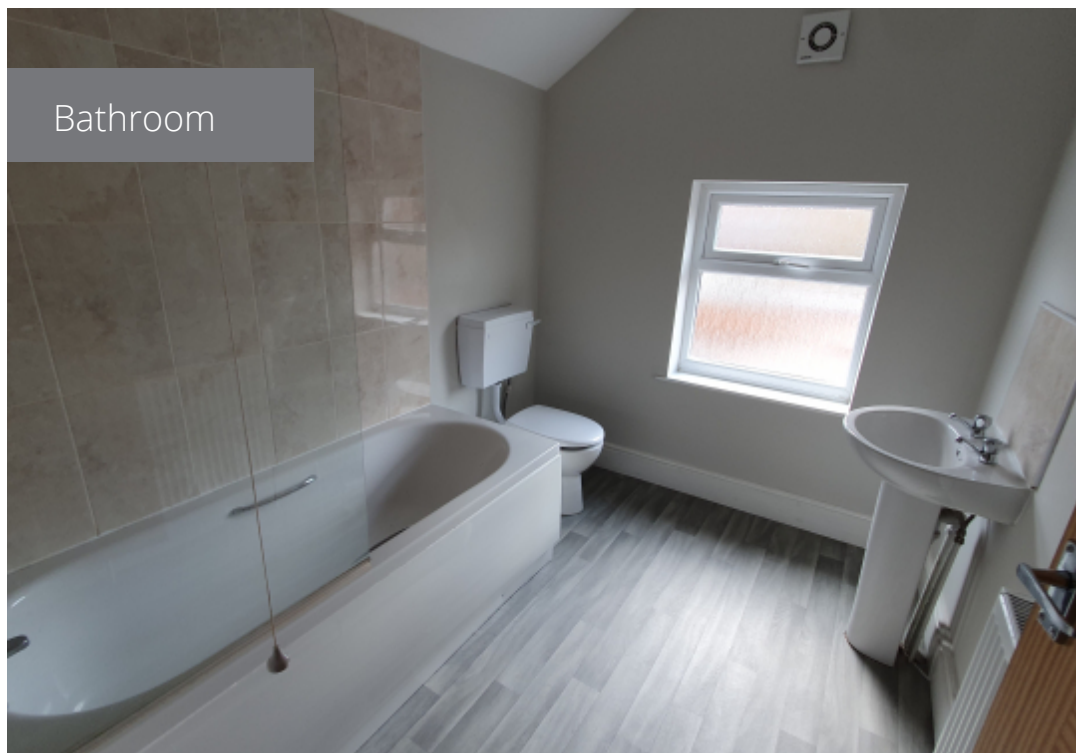
A good-sized bedroom with plenty of light. Double glazed escape windows. New carpet and freshly painted.

Bedroom two (master)

A good-sized bedroom, slightly bigger than bedroom one, still with plenty of light. Double glazed escape windows. New carpet and freshly painted.

Bathroom

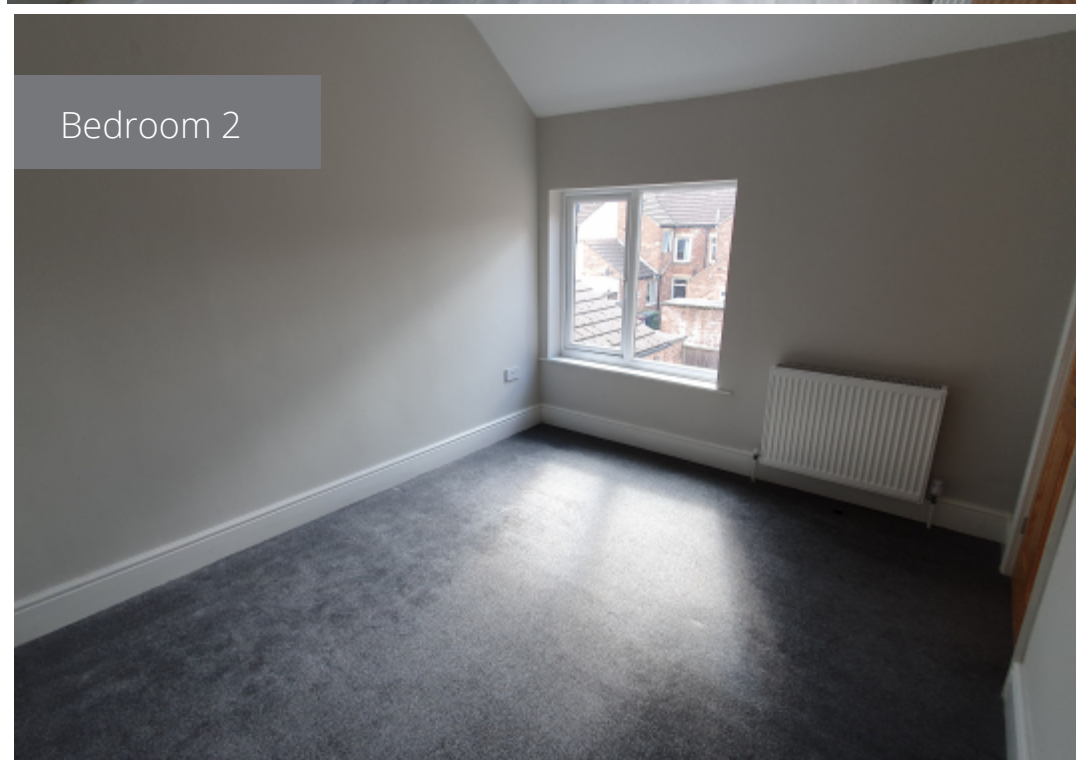
Good sized and well-proportioned bathroom for the size of house, with bath with shower and shower screen. Ceramic wash basin and toilet.



Bathroom



Bedroom 1



Bedroom 2



Front Lawn

Telephone: 0115 697 28 29



www.normangalloway.co.uk